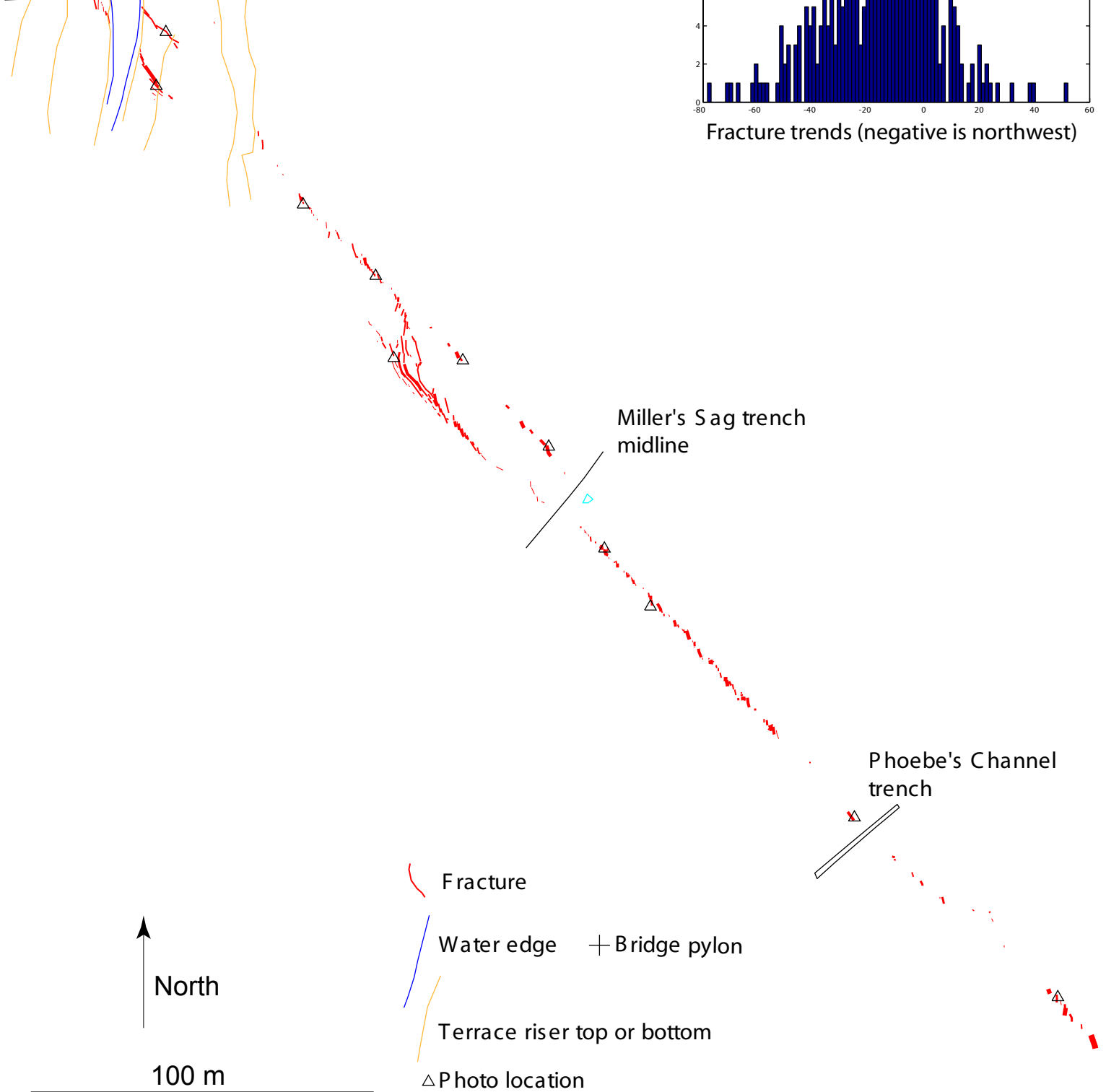
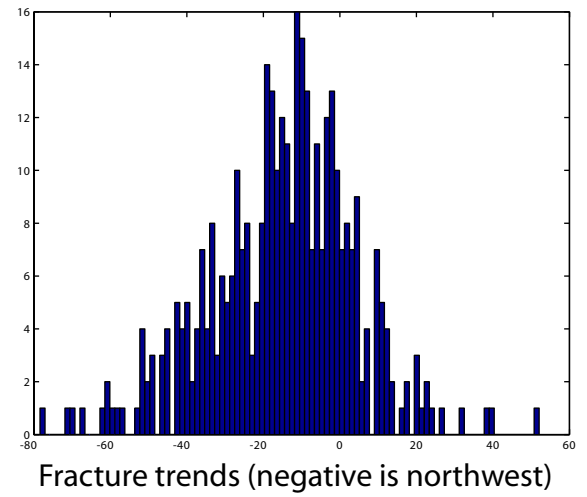
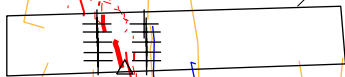


Approximate outline of Parkfield Bridge



Fracture mapping from 2004 Parkfield Earthquake in the Miller's field, mostly just southeast of the Parkfield Bridge Ramón Arrowsmith and Nathan Toké, Department of Geological Sciences, Arizona State University. Fracture openings scale the size of the fracture lines on this map (the largest openings are 4 cm).